

Viewing the Prototype In Adobe Acrobat.

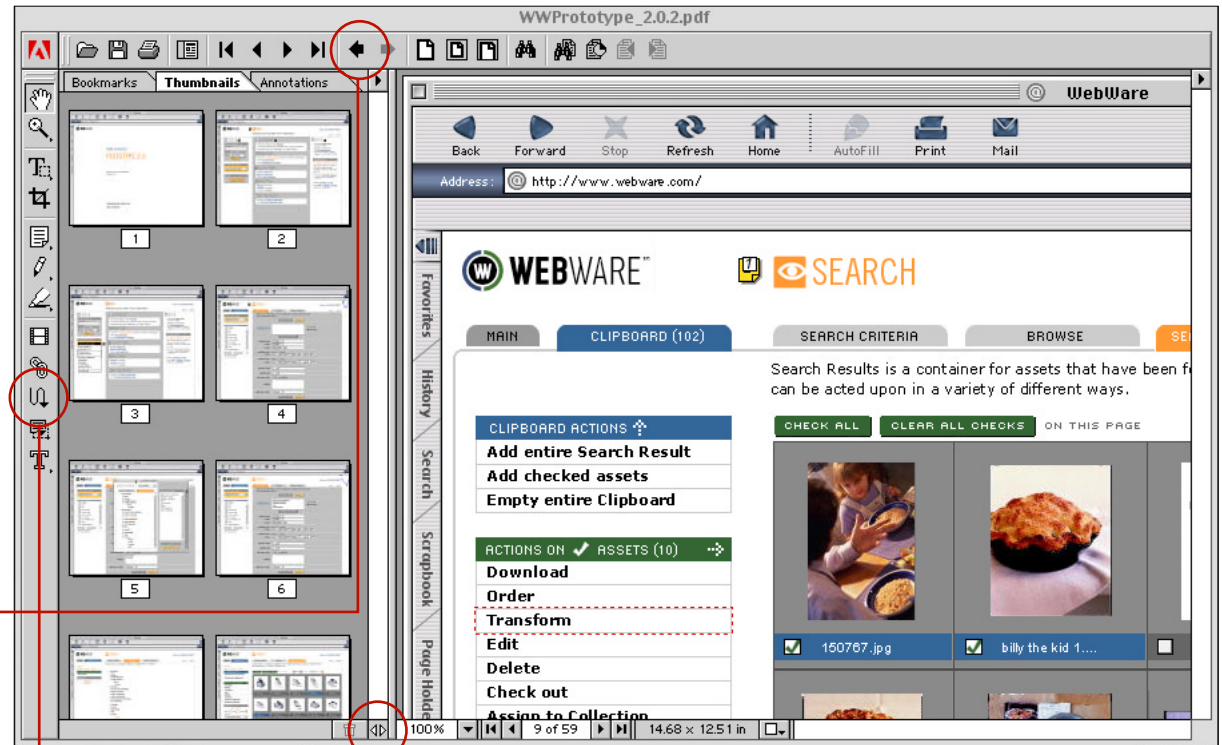
The Prototype is designed to be stepped through in a non-linear way. Links to other screens are delineated by *red dashed borders* indicating a link. Many other non-visible links are available, but the red dashed buttons are there to take you through a particular set of actions, features or functionality.

Opening up the file *WWPROTOTYPE_2.0.pdf* in Adobe Acrobat, rather than Adobe Reader, makes it easier to navigate the Prototype. For example:

Selecting the two arrows at the bottom of the page opens up the *Thumbnail* view. Double clicking on any thumbnail will open up that screen and makes it easy to move around.

The arrow key at the top is equivalent to the *Back* button, and will always take you back to the last screen you were on.

The Link icon on the far left, puts you in Link mode and lets you edit, add and delete links in the Prototype.



NOTES

PRISM INTERACTION MAPS document (IM_MASTER) was created in *Adobe InDesign 1.5* and exported as (IM_MASTER.pdf)

PRISM UI STANDARDS GUIDELINES document (UI_GUIDELINES) was created in *Adobe InDesign 1.5* and exported as (UI_GUIDELINES.pdf)

PRISM PROTOTYPE 2.0 (WWPROTOTYPE_2.0) was created in *Adobe Acrobat 4.*)

All Master *PhotoShop 5.0* files are layered, and saved in standard RGB format. All PDFs were created in *PhotoShop 5.0*, as "Photoshop PDFs" and not as Acrobat PDFs. Any changes made to the Master Photoshop files are saved, then a copy is saved as a "PhotoShop PDF" into the *PRISM_MASTER: WWPROTOTYPE_2.0* folder. This allows Prototype, Interaction Maps, Screens and UI Standards Guidelines documents to utilize all the same source files.

Font used in documents is Verdana.

Fonts used directly in the UI (Trade Gothic Condensed 18, Tenacity and Mini 7) are included in the CD-ROM (WEBWARE PRISM).

Prepared by Kristee Rosendahl 2.2002 kristee@krstudio.com

PRISM UI

February 2002

